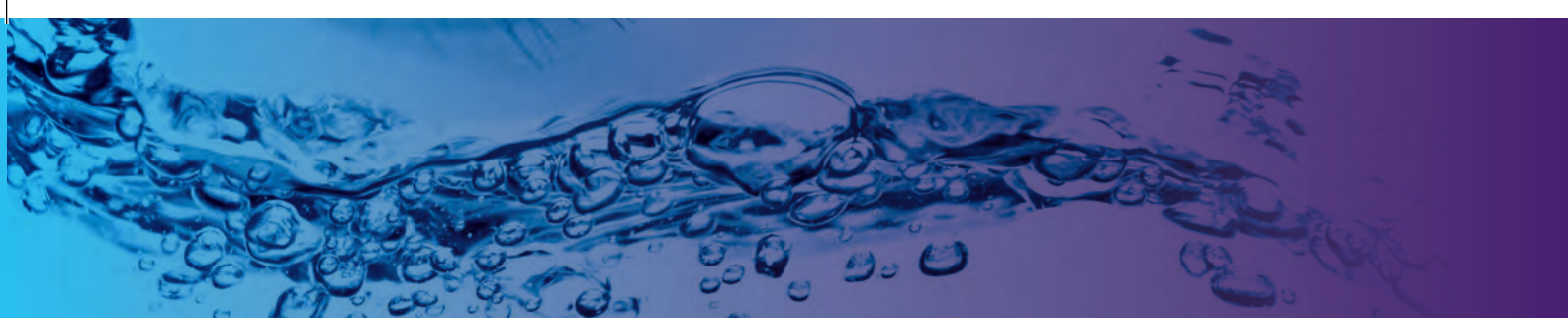
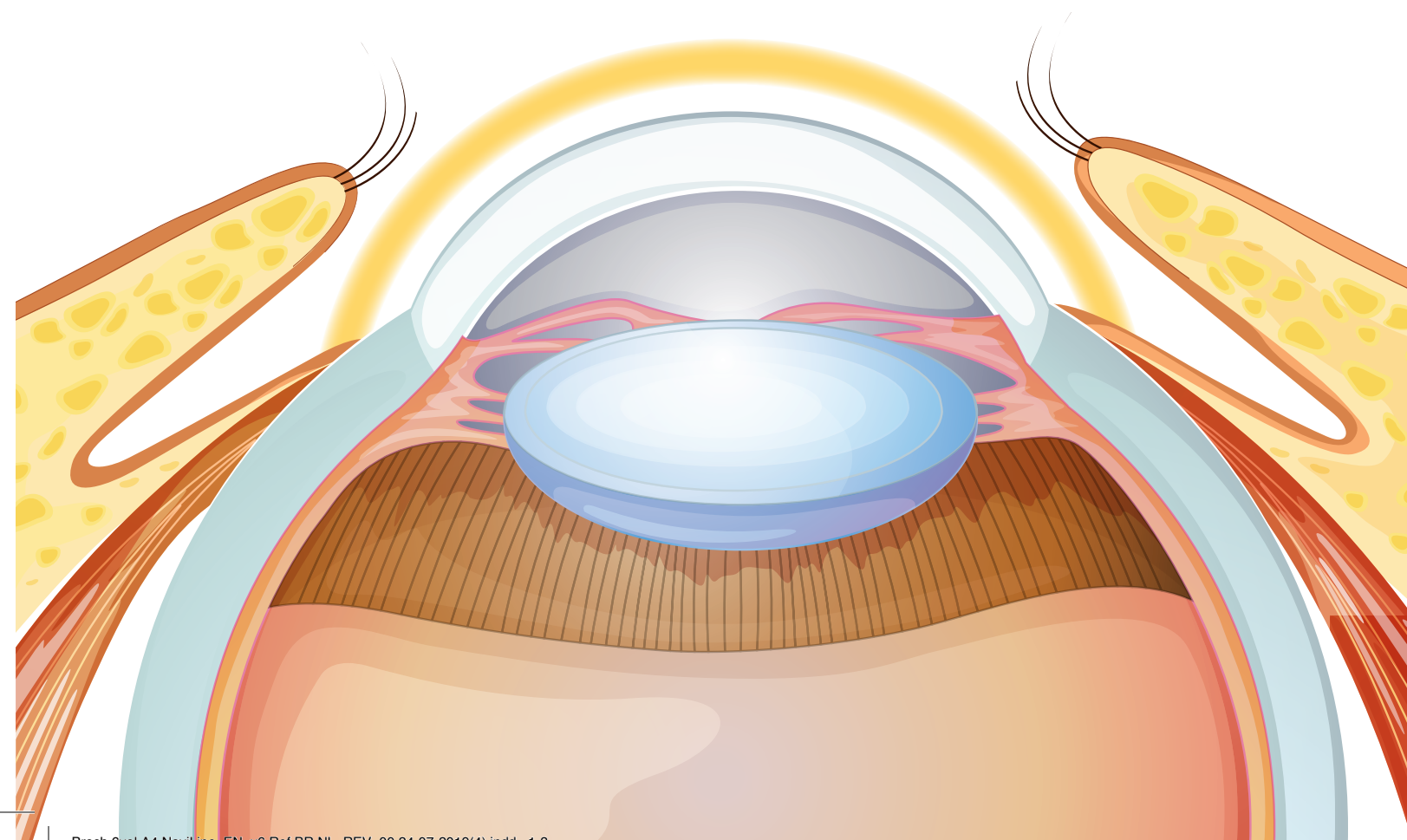


navilipo®

**FORMS A THIN HYDROPHOBIC BARRIER
MAINTAINING:**

- **A PROPER MICROENVIRONMENT** for a healthy ocular surface, especially in case of **DRY EYE, SURGERY AND CORNEAL EROSION.**
- **A UNIFORM AND SMOOTH SURFACE,** with excellent optical properties.



navilipo®

Restoring and lubricating liposomal eye drops

**WITH LIPOSOMES,
SODIUM HYALURONATE
& VITAMIN E**



TECHNICAL DESCRIPTION

COMPOSITION:

Solution with Liposomes, Aloe Vera gel 1%, Chamomile Extract, Sodium Hyaluronate, Vitamin E-TP, Disodium Edetate, PHMB in an isotonic buffered solution.
PS: Does not contain Chlorhexidine, Thimerosal, or Benzalkonium Chloride.

DESCRIPTION:

NAVI LIPO is a lubricating and restoring ophthalmic liposomal solution made up from phospholipids which are natural constituents of the lachrymal fluid which helps restore the lipid layer. The sub-microscopic lipid particles dispersed in the micro-emulsion protect the ocular tissue, by forming a thin hydrophobic barrier, which mimics the lipid layer naturally found in the tear film.

INDICATIONS:

NAVI LIPO eye drops help restoring the ocular surface micro-environment altered by the increased tendency to evaporate, instability of tear film, traumas, ocular surgery, wear of contact lenses, prolonged exposure to computer terminals.

DIRECTION FOR USE:

- 1 - Shake before use.
- 2 - Wash your hands before using the eye drops bottle.
- 3 - Instill 1 or 2 drops of the solution in each eye, as many times as needed or according to your specialist's recommendation.

NAVI LIPO can be used with all types of contact lenses.

WARNINGS:

- In case of eye irritation, stop using the product and contact a physician.
- Do not use if you are allergic to any of the product components.
- Do not touch the eyes with the tip of the bottle.
- Keep out of the reach of children.
- Do not ingest.
- Do not use the product after the expiry date.
- Use within 28 days of first opening.
- Sterile until first opening.
- Close the bottle tightly immediately after use.

CONTRAINDICATIONS:

- None known.

STORAGE:

- Keep away from heat sources.
- Store in a dry place, between 5 and 35°C.

Bottle 3 ml

Bottle 10 ml



NOVAX PHARMA
Le Coronado
20, Av. de Fontvieille
MC 98000 MONACO
www.novaxpharma.com



V1 - Rev. 29/08/2017

REFERENCES

1. Comparative study of treatment of the dry eye syndrome due to disturbances of the tear film lipid layer with lipid-containing tear substitutes. D. Dieter, L. Suwan, D. Sabine, K. J. Chen, S. Gregor, M. Wanda. Klin Monatsbl Augenheilkd 2006; 223: 974-983.
2. Recent Applications of Liposomes in Ophthalmic Drug Delivery. G PMishra, M. Bagui, V. Tamboli, A K.Mitra. Journal of Drug Delivery 22/12/2010.
3. Liposomal Drug Delivery: A Versatile Platform for Challenging Clinical Applications. A. Madni, M. Sarfraz, M. Rehman, M. Ahmad, N. Akhtar, S. Ahmad, N. Tahir, S. Ijaz, R. Al-Kassas, R. Löbenberg. J Pharm Pharm Sci. 03/08/2014.
4. Liposomes in topical ophthalmic drug delivery an update. R. Agarwal, I. Iezhitsa, P. Agarwal, N. A. Abdul Nasir, N. Razali, R. Alyautdin, N.M. Ismail. Drug Deliv. 2016; 23(4): 1075-1091.
5. Performance profile of sodium hyaluronate in patients with lipid tear deficiency: randomised, double-blind, controlled, exploratory study. P. Prathasawat, N. Tesavibul, N. Kasetsuwan. Br J Ophthalmol 2007; 91:47-50.
6. Ocular irritation - Novax Pharma Data
7. Compatibility with contact lenses - Novax Pharma Data
8. Cytotoxicity test - Novax Pharma Data
9. Hypersensitivity test - Novax Pharma Data



APPROUVÉ
Par Erica Tartaglione, 16:34, 07/10/2019

navilipo®

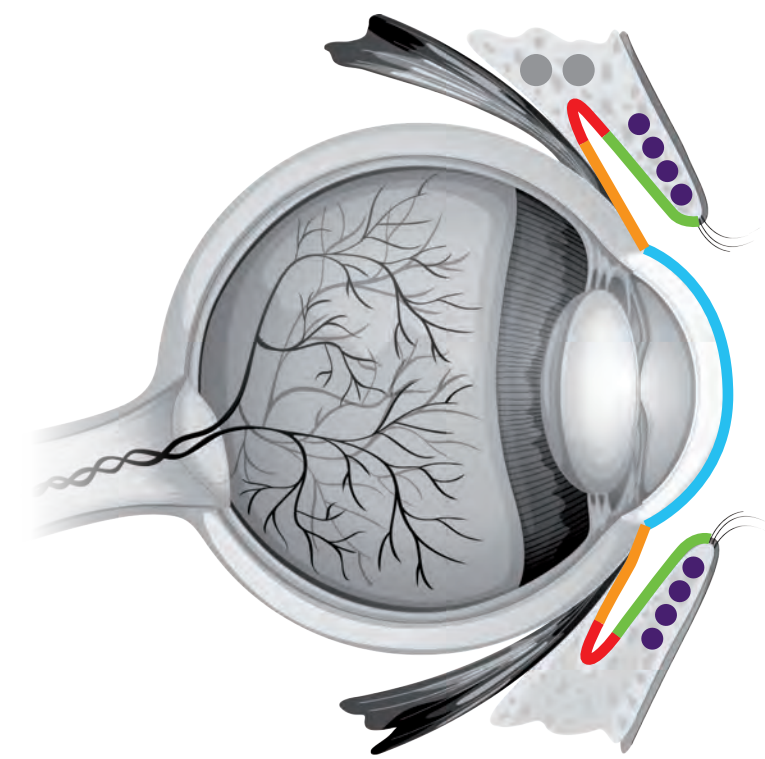
EYE DROPS

**LIPOSOMAL SOLUTION FOR
OCULAR SURFACE DISORDERS**



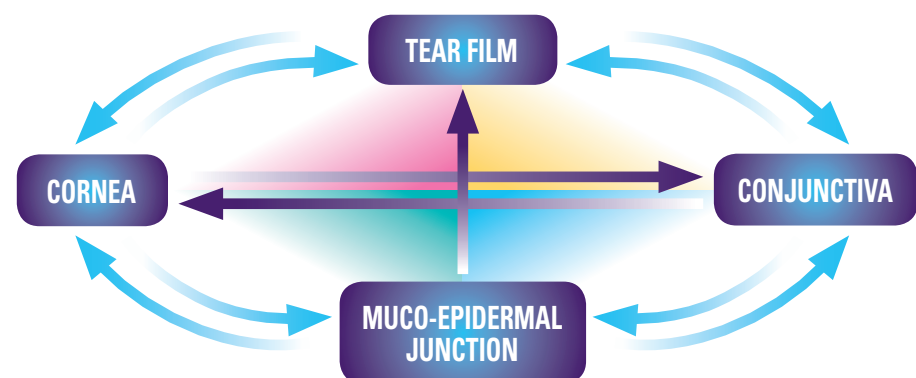
The information reported here is meant to be used only by physicians

The **OCULAR SURFACE** is the interface between the eye and the external environment. It is made up of different structures which work together as a functional unit.



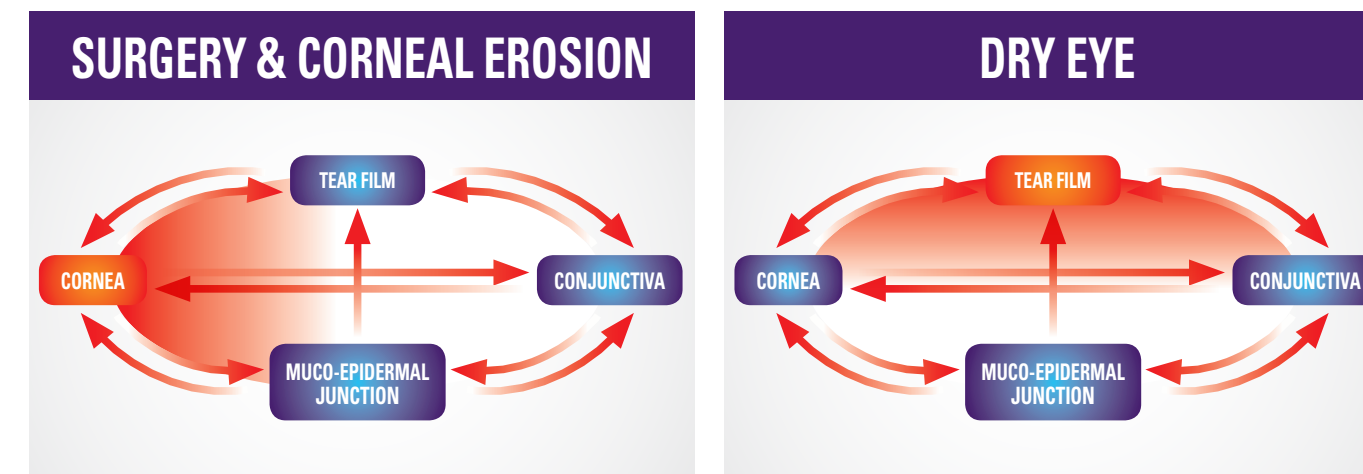
- Accessory lacrimal glands
- Fornix
- Bulbar conjunctiva
- Tarsal conjunctiva
- Corneal surface
- Meibomian glands

Any alteration in one of these structures can cause a chain reaction involving all the other ocular surface components.

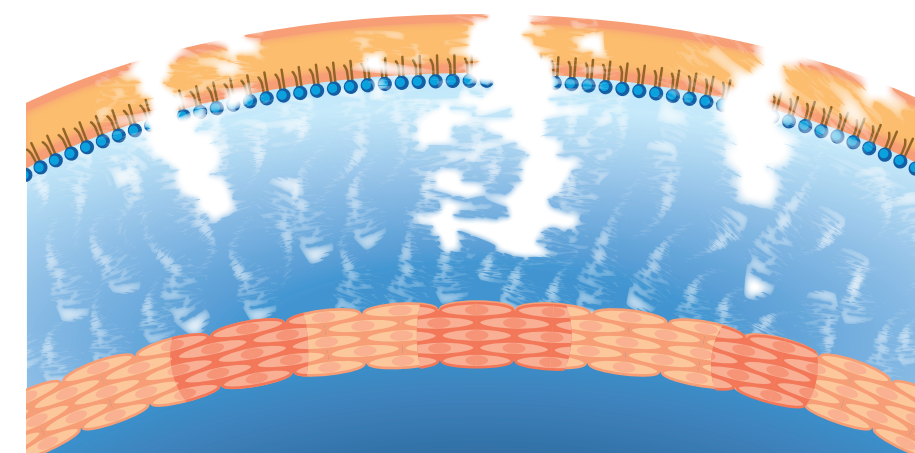
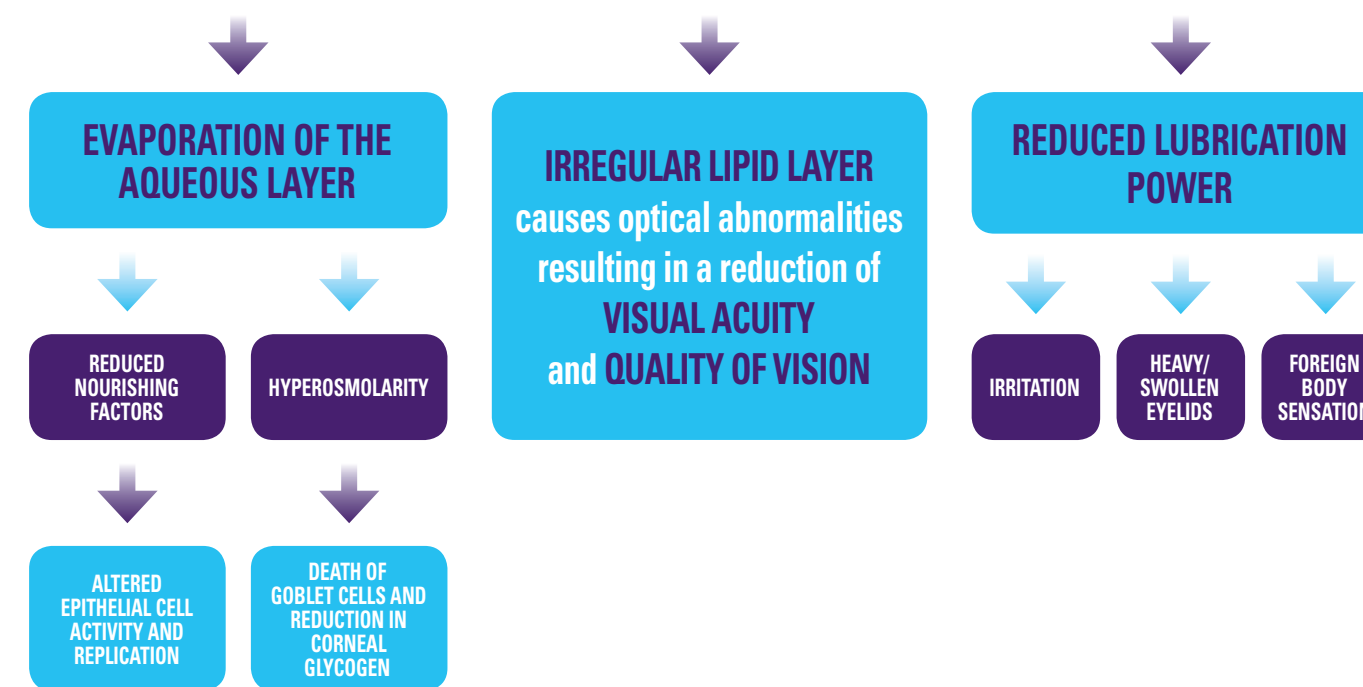


In the treatment of ocular surface disorders the **therapeutic goal** should **SUPPORT THE REPAIR PROCESSES & ACHIEVE RELIEF OF SYMPTOMS**

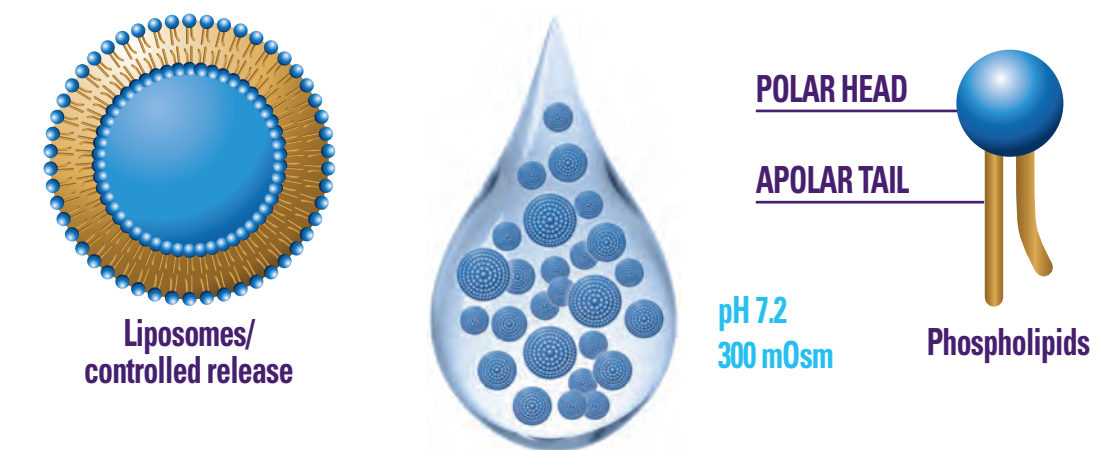
In case of **DRY EYE, OCULAR SURGERY and CORNEAL EROSION** THE **LIPID LAYER** PLAYS A KEY ROLE in the physiological **REPAIR** processes.



ALTERATION OF THE LIPID LAYER PRODUCES:



navi[®]liPO



Ophthalmic liposomal solution which uniformly spreads phospholipids into the lipid layer naturally found in the tear film.

PHOSPHOLIPIDS

- **STABILIZE** the tear film, anchoring the lipid phase to the underlying aqueous phase.
- **MAINTAIN** the lipid structure organized in an orderly and elastic manner.
- **RESTORE** the physiological lipid shield, which controls the evaporation of the tear film and its optical properties.

